

Main Marlin Site
<http://www.marlinfirearms.com/>

MFC
100 KENNA DRIVE
NORTH HAVEN, CT 06473
PHONE: 800-544-8892

MODEL 60 PARTS LIST

For parts prices, call 1-800-544-8892

Conn. residents call 239-5621

(8 A.M. to 4:30 P.M., Eastern Time, Weekdays)

Be sure to mention gun serial number when ordering parts

Specifications subject to change without notice.

Paul's Note: If replacing the recoil Spring, you should also replace the Recoil spring Guide

38	Recoil Spring	307496
39	Recoil Spring Guide	307071

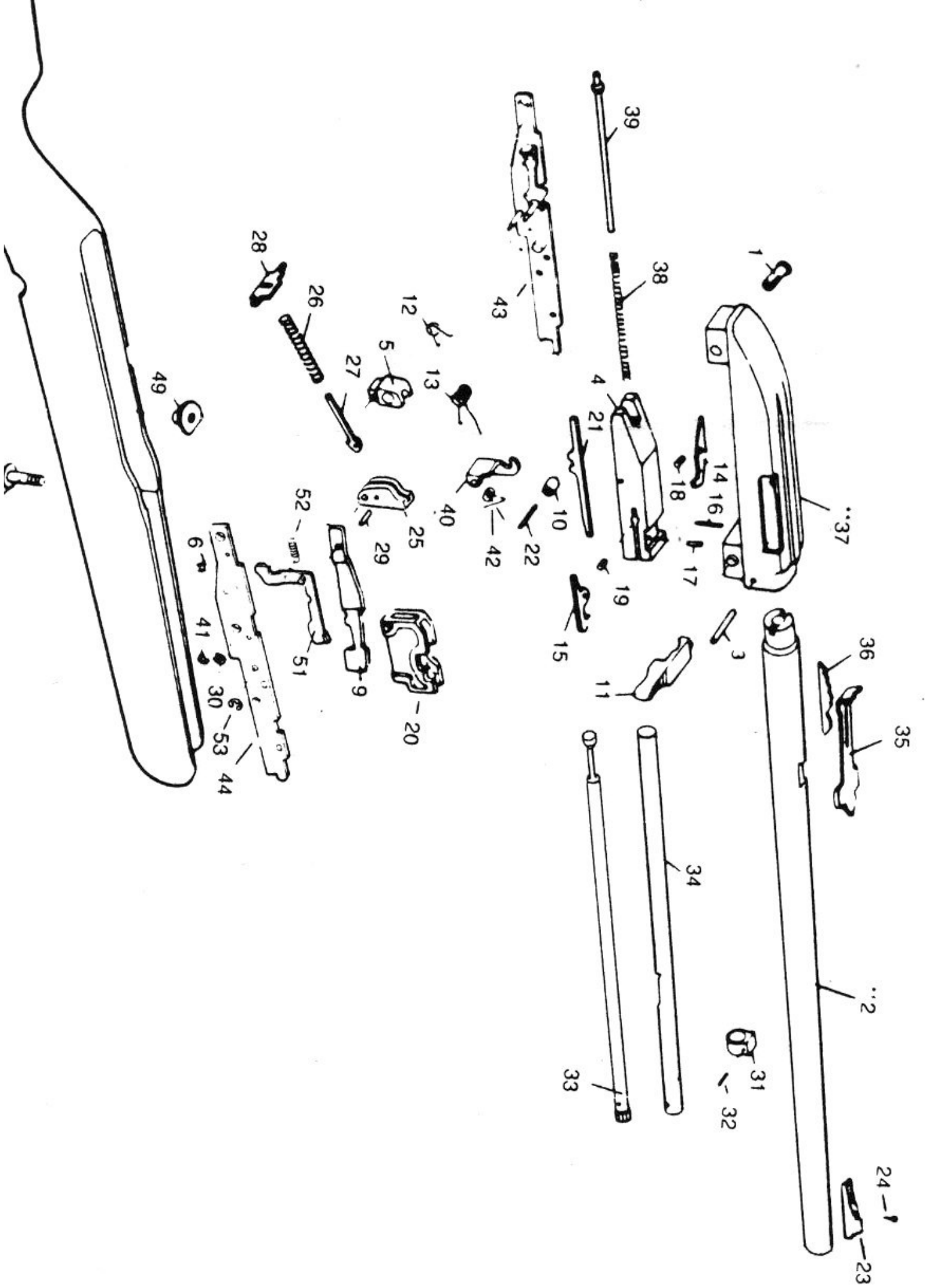
MODEL 60

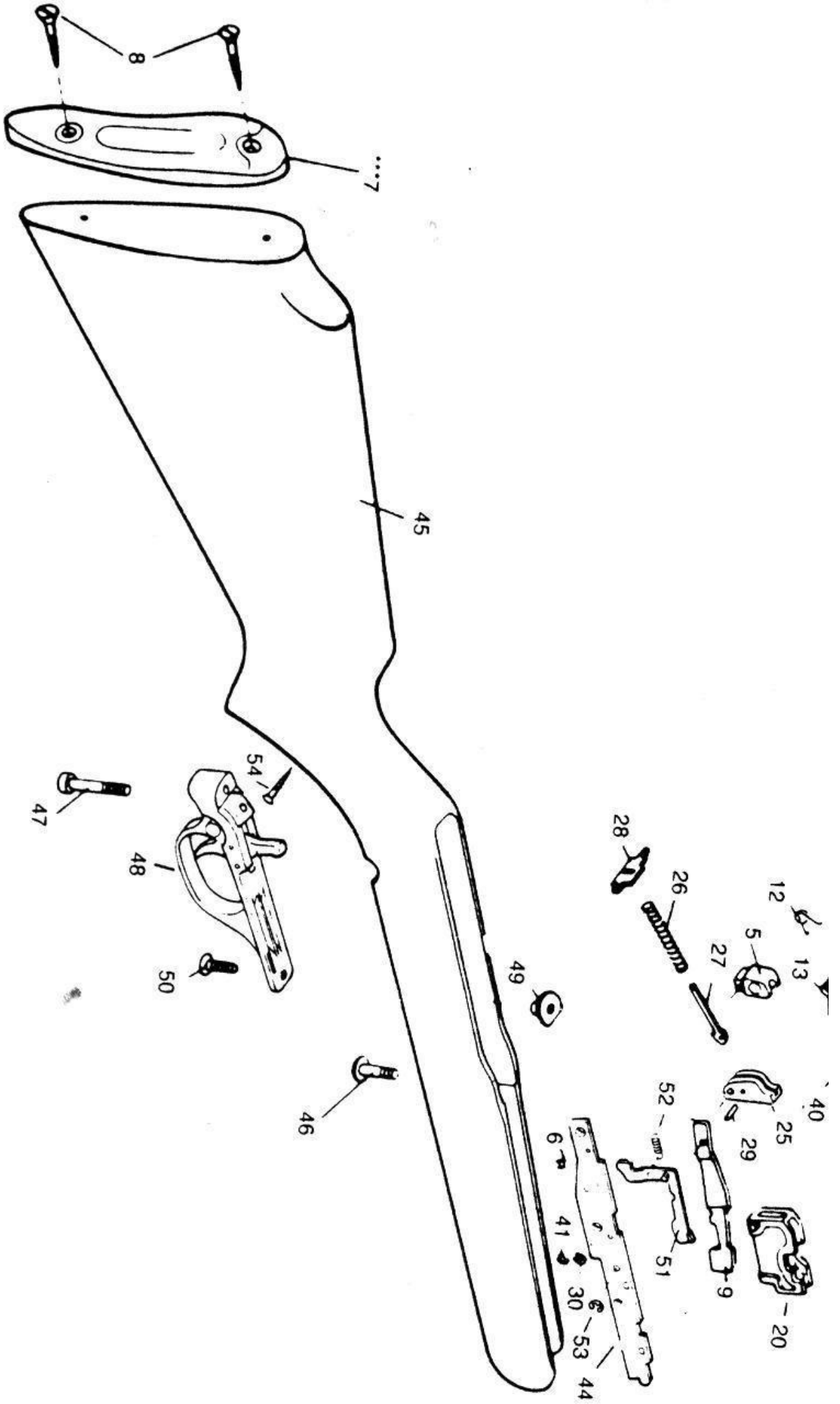
- *Restricted availability — Part sent to qualified gunsmith only.
- **Restricted availability — Parts installed at factory only.
- ***Non-restricted availability — Part may require some final fitting, sanding or filing.

SPECIFICATIONS:

Self-loading 22 rifle. Tubular magazine holds 14 Long Rifle (only) cartridges (If rifle is loaded with the bolt closed, which is *not* recommended, the magazine will hold one more round). 22" barrel, rustproof receiver grooved for scope mount; walnut finished hardwood Monte Carlo stock; approx. wt. 5½ lbs; o.a. length 40½", crossbolt safety, manual bolt hold-open, automatic "fast shot" bolt hold-open.

#607490





III. No.	Part Name	Part No.
1	Assembly Post	407997
**2	Barrel	107740
3	Barrel Retaining Pin	307897
	Breech Bolt Complete (Not Shown)	507186
4	Breech Bolt	107186
5	Buffer	407082
6	Buffer Pin Ring	407178
***7	Buttplate	320402
8	Buttplate Screw (2)	420590
9	Cartridge Lifter	307287
10	Cartridge Lifter Roller	307188
11	Charging Handle	207050
12	Disconnecter Spring	407196
13	Ejector Lifter Spring	307295
14	Extractor Left Hand	320269
15	Extractor Right Hand	320369
16	Extractor Pin, Left Hand	320798
17	Extractor Pin, Right Hand	307097
18	Extractor Spring, Left Hand	407895
19	Extractor Spring, Right Hand	407895
20	Feedthroat	407285
21	Firing Pin	407299
22	Firing Pin Retaining Pin	307198
23	Front Sight	330144
24	Front Sight Screw	320593
25	Hammer	207173
26	Hammer Spring	407094
27	Hammer Strut	407179

Ill. No.	Part Name	Part No.
28	Hammer Strut Bridge	307075
29	Hammer Strut Pin	407199
	Hammer Complete (Consisting of above 5 Parts)	507173
30	Hammer Lifter Pin Ring	407178
31	Magazine Tube Band	220121
32	Magazine Tube Band Pin	420698
33	Magazine Tube Inside Complete	507922
34	Magazine Tube Outside	307923
35	Rear Sight With Elevator	520641
36	Rear Sight Elevator Only	320942
**37	Receiver	507160
38	Recoil Spring	307496
39	Recoil Spring Guide	307071
40	Sear	307151
41	Sear Pin Ring	407178
42	Sear Spring	407795
43	Sideplate Assembly, Left Hand	507164
44	Sideplate, Right Hand	207264
	Action Assembly Complete (Not Shown)	507287
45	Stock	507914
46	Takedown Screw, Front	307192
47	Takedown Screw, Rear	307392
48	Trigger Guard Assembly	507458
49	Trigger Guard Nut, Front	307491
50	Trigger Guard Screw, Front	307690
51	Bolt Release Lever	507183
52	Extension Spring	407796
53	Lever Retaining Ring	407252
54	Stock Reinforcement Screw	307790